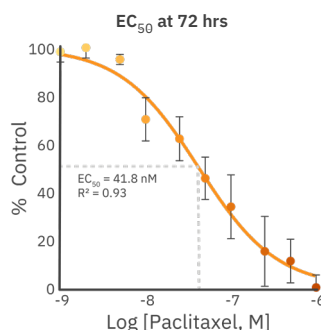
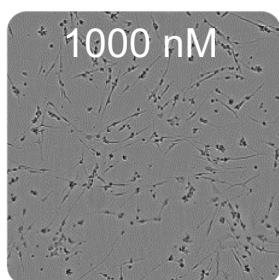
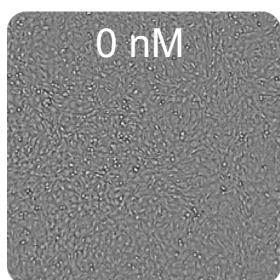




See biology in action

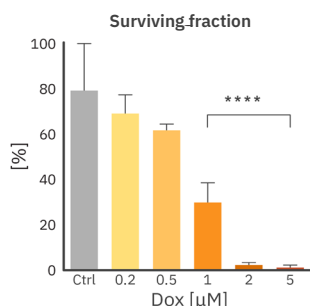
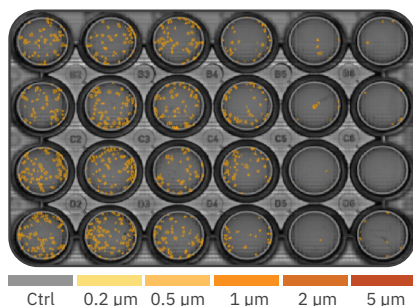
Discover the power of kinetic live-cell imaging assays with Axion BioSystems' next-generation Omni platform. Check out the examples below or **click on the Read more buttons** to read the full application notes.

>> Long-term, noninvasive viability monitoring of paclitaxel-treated cells



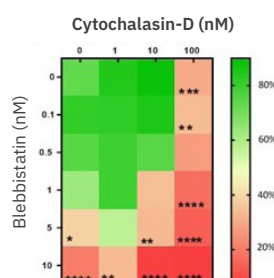
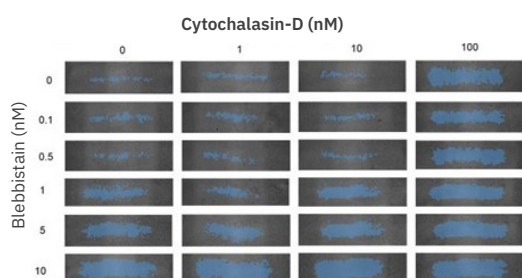
Long-term cytotoxic effects of paclitaxel are tracked label-free. [Read more](#)

>> Quantifying chemotoxicity on cancer cell colony formation using live-cell imaging



A clonogenic assay with automated whole-well analysis for evaluation of chemotherapeutic compounds. [Read more](#)

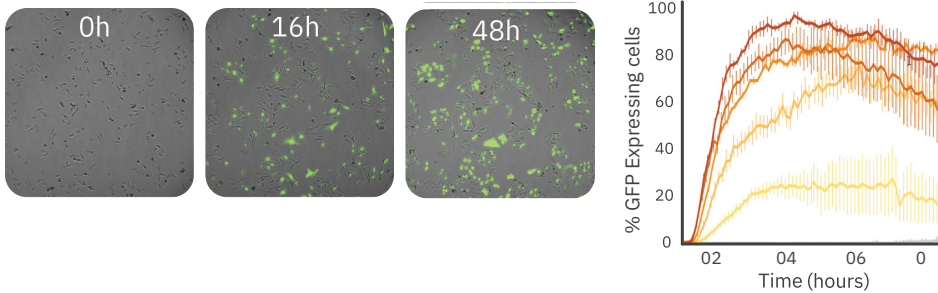
>> The effect of blebbistatin and cytochalasin-D on the migration capacity of mouse embryonic fibroblasts



Real-time scratch closure analysis for kinetic quantification of wound healing by cell migration. [Read more](#)

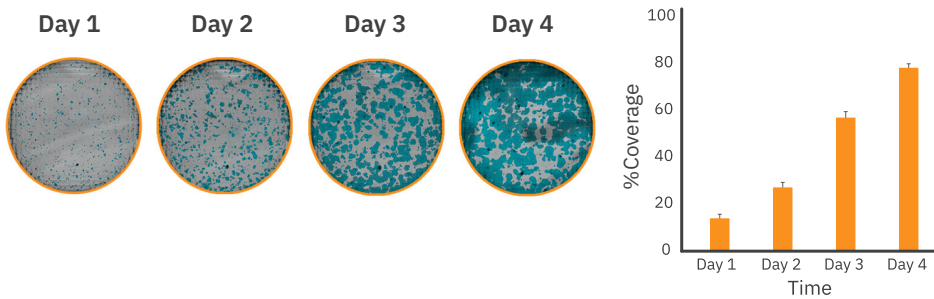


>> Analysis of BacMam-transduced HeLa cells with high-throughput, live-cell imaging



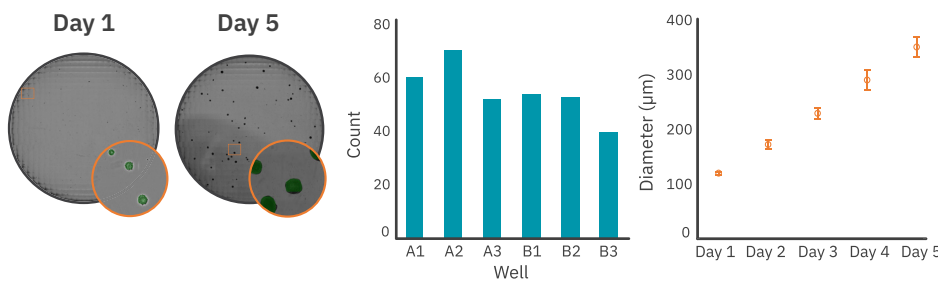
Real-time fluorescence is used to evaluate transfection efficiency for optimal virus concentration, timing, and minimal toxicity. [Read more](#)

>> Automated real-time monitoring of stem cell cultures



iPSC colony growth is automatically monitored to ensure consistent passaging and culture quality. [Read more](#)

>> Automated analysis and label-free characterization of embryoid bodies on the Omni platform



The number, size, and roundness of spheroids during formation are tracked with the Omni. [Read more](#)



Omni FL

Omni Pro 12

Omni BR